



GMT MONTHLY MEMBERSHIP PROGRESS REPORT

Results as of: 6/30/2019

Multiple District 43

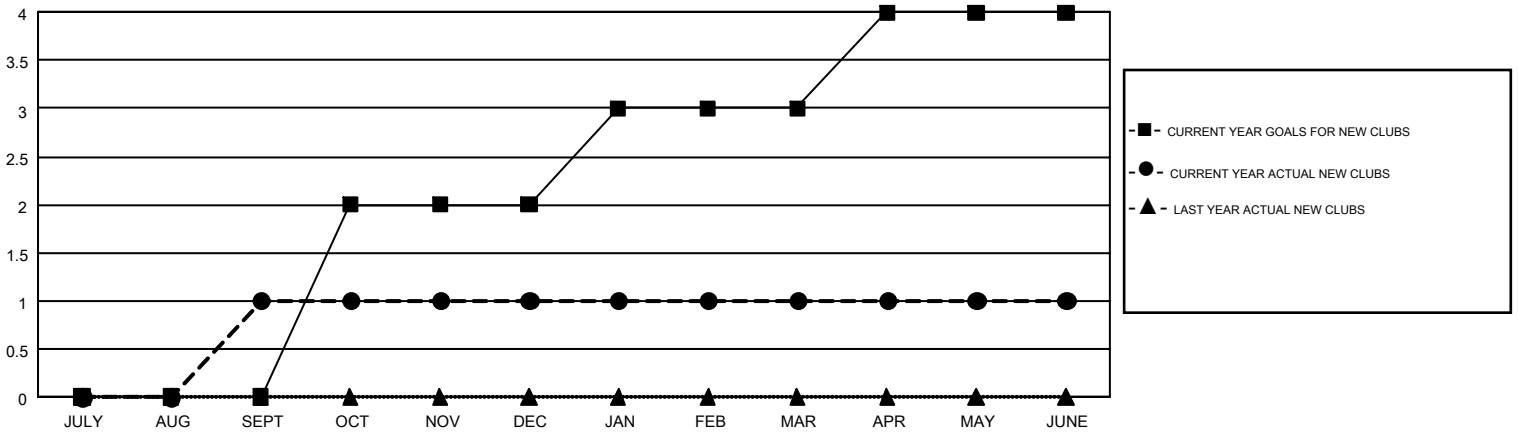
LOCATION: KENTUCKY

GMT: STEVE ANTON

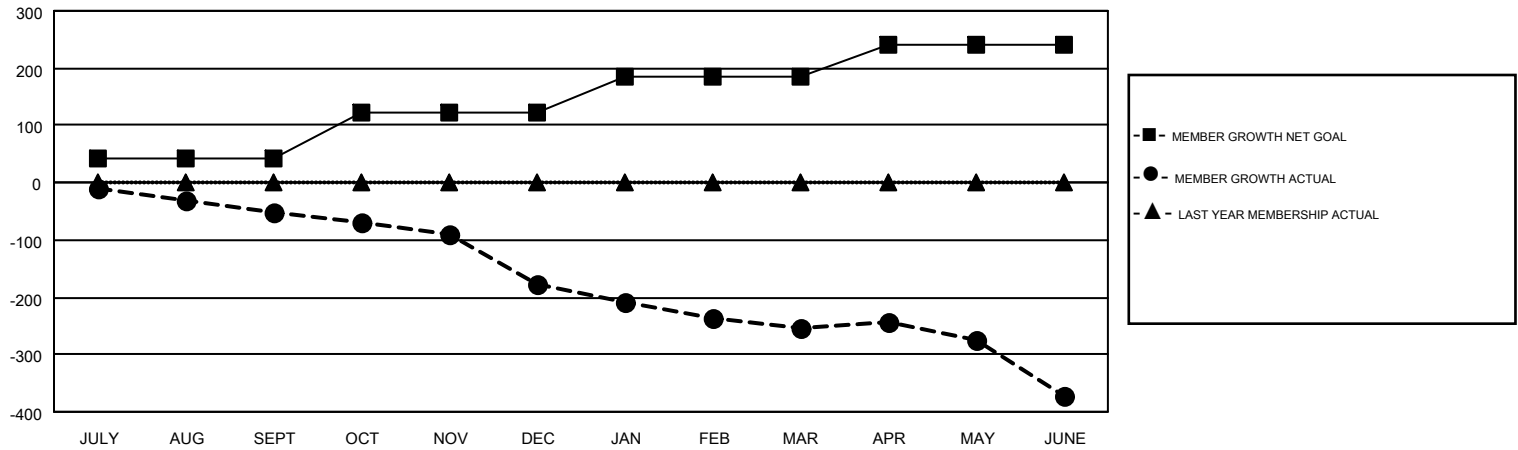
GMT CA 1

| Clubs | | | | Members | | | |
|-----------------------|---------------|-----------|---------------|-----------------------|------------------------|----------------------|--|
| RESULTS FOR 2018-2019 | | | | RESULTS FOR 2018-2019 | | | |
| QUARTER | NEW CLUB GOAL | NEW CLUBS | DROPPED CLUBS | QUARTER | MEMBER GROWTH NET GOAL | MEMBER GROWTH ACTUAL | DROPPED MEMBERS ACTUAL (including transfers) |
| JULY/AUG/SEPT | 0 | 1 | 2 | JULY/AUG/SEPT | 43 | 121 | 166 |
| OCT/NOV/DEC | 2 | 0 | 2 | OCT/NOV/DEC | 78 | 69 | 187 |
| JAN/FEB/MAR | 1 | 0 | 1 | JAN/FEB/MAR | 63 | 96 | 164 |
| APR/MAY/JUNE | 1 | 0 | 2 | APR/MAY/JUNE | 58 | 94 | 206 |

GOALS AND ACTUAL NEW CLUBS CUMULATIVE



GOALS AND ACTUAL MEMBERS CUMULATIVE



| | | | |
|------------------------|---|---------------------------------|----------------|
| DROPPED CLUBS: 7 | 87 CLUBS OF 170 ADDED 1 OR MORE NEW MEMBERS | <u>GENDER DISTRIBUTION</u> | |
| | | MALE | 2,760 (66.94%) |
| | | FEMALE | 1,363 (33.06%) |
| <u>DROPPED MEMBERS</u> | | TOTAL FAMILY UNIT MEMBERS | 883 |
| DECEASED | 77 | FAMILY MEMBERS PAYING HALF DUES | 454 |
| CLUB CANCELLED | 89 | | |
| OTHER | 557 | | |
| TOTAL | 723 | | |

[CLICK HERE FOR CUMULATIVE MEMBERSHIP DATA](#)